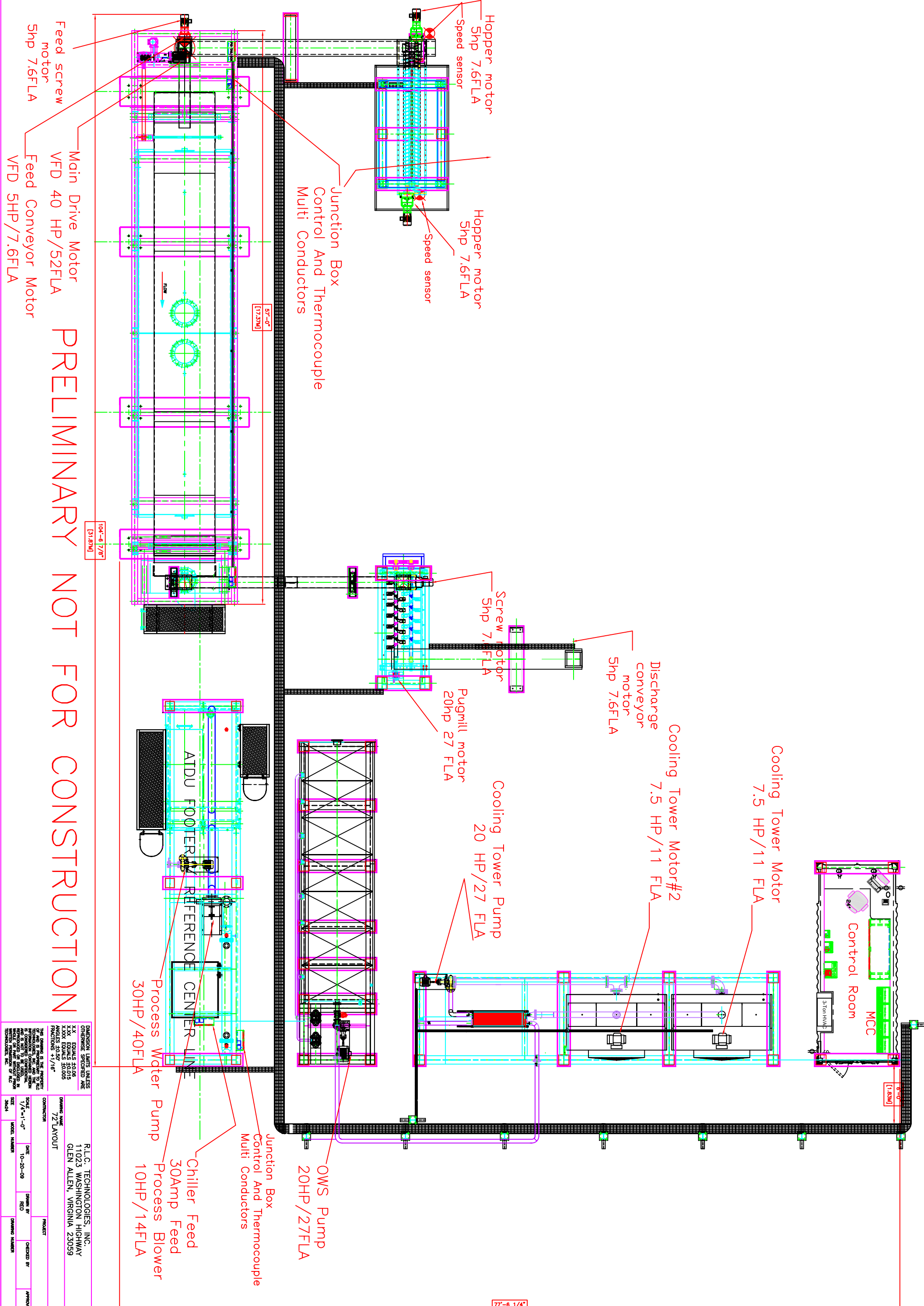


PRELIMINARY NOT FOR CONSTRUCTION



CONSTRUCTION

SCALE: 1/4"=1'-0"

DATE: 10-20-09

PROJECT: R.L.C. TECHNOLOGIES, INC.
11023 WASHINGTON HIGHWAY
GLEN ALLEN, VIRGINIA 23059

DRAWING NO: 721 LAYOUT

DESIGNED BY: RED

CHECKED BY:

APPROVED BY:

REV. NO. 1

GENERAL NOTES:

1. DIMENSION LINES UNLESS OTHERWISE SPECIFIED ARE IN FEET AND INCHES.

2. ALL WORK SHALL BE IN ACCORDANCE WITH THE LATEST EDITIONS OF THE AIAA, ASME, AND OTHER APPLICABLE STANDARDS.

3. THE DRAWING IS THE PROPERTY OF R.L.C. TECHNOLOGIES, INC. AND IS NOT TO BE REPRODUCED OR TRANSMITTED IN ANY FORM OR BY ANY MEANS, ELECTRONIC OR MECHANICAL, INCLUDING PHOTOCOPYING, RECORDING, OR BY ANY INFORMATION STORAGE AND RETRIEVAL SYSTEM, WITHOUT THE WRITTEN PERMISSION OF R.L.C. TECHNOLOGIES, INC.